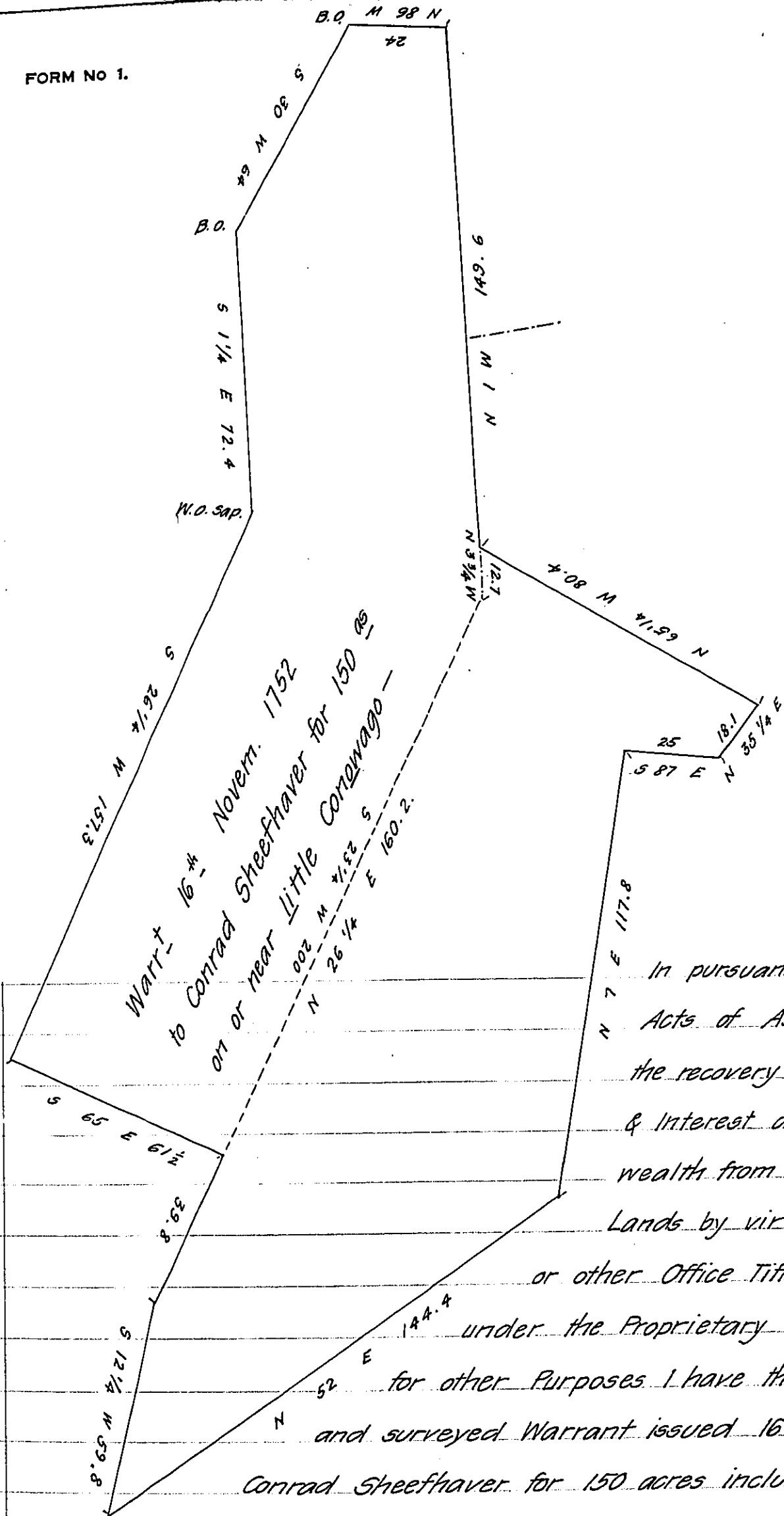


FORM NO 1.



Warrant 16<sup>th</sup> Novem. 1752  
 to Conrad Sheefhaver for 150<sup>ac</sup>  
 or near Little Conowago

In pursuance of the several  
 Acts of Assembly directing  
 the recovery of the Principal  
 & Interest due to the Common-  
 wealth from Persons holding  
 Lands by virtue of Locations  
 or other Office Titles issued from or  
 under the Proprietary Government and  
 for other Purposes I have this day located  
 and surveyed Warrant issued 16<sup>th</sup> Novem<sup>r</sup> 1752 to  
 Conrad Sheefhaver for 150 acres including his Improve-  
 ment where Christ<sup>m</sup> Stoner has presumed to settle on or near Little Con-  
 owago, on lands situate in Conowago Township Adams County & have found  
 the Interferences as represented in the enclosed diagram. Witness my hand  
 Sept 13<sup>th</sup> 1837  
 Jno L. Gubernator

IN TESTIMONY that the above is a copy of the original remaining on file in  
 the Department of Internal Affairs of Pennsylvania, made  
 conformably to an Act of Assembly approved the 16th day of  
 February, 1833, I have hereunto set my Hand and caused  
 the Seal of said Department to be affixed at Harrisburg,  
 this twenty ninth day of October 1908

*Henry Horner*  
 Secretary of Internal Affairs.